

Rehabilitation Medicine

What Is Rehabilitation Medicine?

Rehabilitation medicine works to help restore movement and functional ability, and enhance quality of life for people who have physical disabilities or injuries. Rehabilitation medicine specialists—also called physiatrists—are physicians who specialize in the rehabilitation care and medical management of children who have musculoskeletal conditions.

Working closely with other specialty areas such as **neurology**, **neurosurgery**, and **orthopedics**, our physicians treat conditions such as **cerebral palsy** and related conditions, **neuromuscular disorders**, as well as many other conditions that affect your child's development. They oversee rehabilitation care when children experience loss of function secondary to **brain injury**, **spinal cord injury**, illness or stroke.

At Gillette Children's Specialty Healthcare, you'll have access to the highest concentration of pediatric rehabilitation medicine specialists in the nation. Gillette is one of just three pediatric specialty programs in Minnesota accredited by the **Commission on the Accreditation of Rehabilitation Facilities (CARF)** to meet the needs of young children and adolescents seeking acute inpatient rehabilitation. Gillette is one of eight U.S. pediatric inpatient rehabilitation facilities to have CARF accreditation for both its pediatric specialty and pediatric brain injury programs.

Conditions Rehabilitation Medicine Treats

Rehabilitation medicine specialists treat children, teens and adults who have a wide variety of disabilities and complex conditions. It can also help if your child has experienced a traumatic or sports injury.

Rehabilitation medicine can benefit people who have:

- **Cerebral palsy.**
- **Brain injury** and **related neurotrauma, including concussion.**
- **Spinal cord injury and related neurotrauma.**
- **Complex movement disorders.**
- **Deep brain stimulation for dystonia.**
- Muscular dystrophy and other **neuromuscular conditions.**
- Pediatric multiple sclerosis and other neuroimmunological conditions.
- **Spina bifida.**
- **Birth brachial plexus injury.**
- Chronic pain.

- Had orthopedic **single event multilevel surgery (SEMLS)**, **selective dorsal rhizotomy (SDR) surgery** or other major surgeries that require **rehabilitation therapies**.
- Amputations and missing limbs.
- **Intrathecal baclofen pump** for spasticity or dystonia.

Tests and Treatments.

You'll have access to the latest technology and techniques in rehabilitation medicine at Gillette.

For Medical Management of a Complex Condition

If your child has cerebral palsy, spasticity or other complex movement disorders your Gillette specialist might recommend evaluations and treatments like:

- Injecting **botulinum toxin and phenol**, which are spasticity medications.
- Implanting and managing an **intrathecal baclofen pump**, which stores and delivers targeted amounts of medication to the spine.
- Use of deep brain stimulation to manage dystonia

For Rehabilitation After Surgery or Injury

If your child needs rehabilitation care following a complex procedure like **selective dorsal rhizotomy (SDR) surgery** or **single event multilevel surgery (SEMLS)**, or traumatic **brain injury** or **spinal cord injury**, Gillette can help with:

- **Comprehensive inpatient rehabilitation.**
- Planning for and rehabilitation care.

For Diagnosing a Condition

The first step in an integrated treatment plan is an accurate diagnosis. Gillette offers these evaluations to help diagnose a condition:

- **Spasticity evaluations** for brain or spinal cord injuries, cerebral palsy and stroke.
- ImPACT testing for **concussion and related neurotrauma.**
- **Gait and motion analysis** for walking and movement disorders.
- Assessment of **complex movement disorders.**

Integrated Care

Our providers collaborate with other Gillette specialists to provide comprehensive inpatient and outpatient pediatric rehabilitation services, such as **physical therapy**, **occupational therapy** and **speech and language therapy**. We'll help you navigate the services you need.

With both pediatric and adult-focused providers, you'll be working with experts who specialize in highly complex conditions and injuries.

As your child gets older, Gillette will support your family in making the transition to adult-focused health care—older teens and adults can benefit from **Gillette Lifetime Specialty Healthcare**.

To search for additional providers, visit **Our Care Team**.



[Nanette Aldahondo, MD](#)

[Pediatric Rehabilitation Medicine Specialist](#)



[Amy Authement, MD](#)

[Pediatric Rehabilitation Medicine Specialist](#)



[Kelly Bolf, APRN, CNP FNP](#)

[Family Nurse Practitioner](#)



Kelly Cho, MD

Pediatric Rehabilitation Medicine Physician



Meagan Crary, MSN, APRN, CNP

Family Nurse Practitioner



[Supreet Deshpande, MD](#)

[Pediatric Rehabilitation Medicine Specialist](#)



[Jill Gettings, MD](#)

[Physical Medicine and Rehabilitation Specialist](#)



[Mark Gormley, Jr., MD](#)

[Pediatric Rehabilitation Medicine Specialist](#)



[Krissa Jefferis, PNP](#)

[Pediatric Nurse Practitioner](#)



[Rebecca Koerner, MD](#)

[Physical Medicine and Rehabilitation Specialist](#)



[Linda Krach, MD](#)

[Rehabilitation Medicine Physician](#)



[Leslie Larson, APRN, CNP- PC, CNP - PMHS, CBIS, CIC](#)

[Pediatric Nurse Practitioner](#)



[Kathy Lindstrom, APRN, CFNP, FNP-BC](#)

[Family Nurse Practitioner](#)



[Kevin Murphy, MD](#)

[Pediatric Rehabilitation Medicine Specialist](#)



[Lee Yung Schuh, MD](#)

[Physical Medicine and Rehabilitation Specialist](#)



[Angela Sinner, DO](#)

[Pediatric Rehabilitation Medicine Physician](#)



[Jean Stansbury, APRN, CNP, CHPPN](#)

[Pediatric Nurse Practitioner](#)



[Marshall Taniguchi, MD](#)

[Pediatric Rehabilitation Medicine Specialist](#)



[Marcie Ward, MD](#)

[Pediatric Rehabilitation Medicine Specialist](#)



[Jennifer Wilhelmy, ANP](#)

[Adult Nurse Practitioner](#)

Locations



[St. Paul Campus](#)



[Alexandria Clinic](#)



[Bemidji Clinic](#)



[Burnsville Clinic](#)



[Duluth Clinic](#)



[Gillette Mankato Clinic](#)



[Maple Grove Clinic](#)



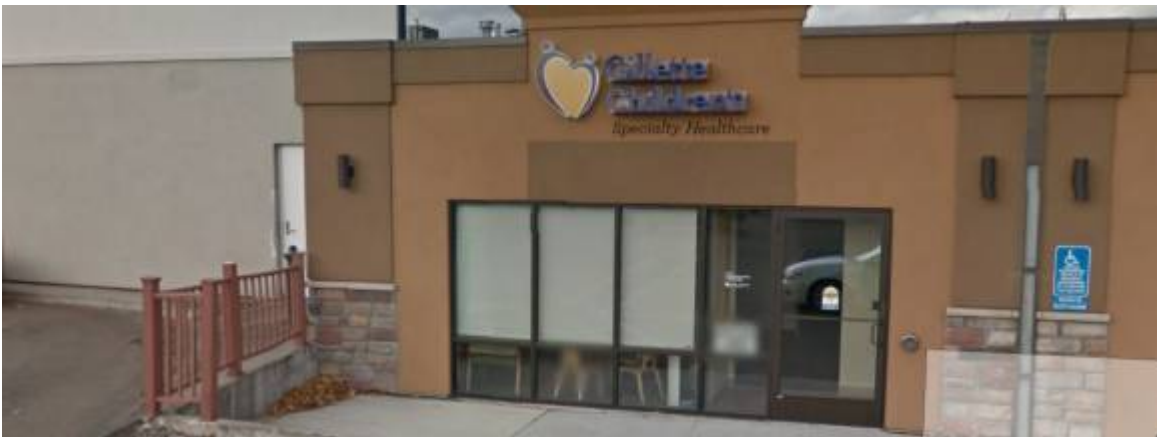
[Minnetonka Clinic](#)



[Phalen Clinic](#)



[St. Cloud Clinic](#)



[Willmar Clinic](#)

Make An Appointment [**651-290-8707**](tel:651-290-8707) Refer a Patient [**651-325-2200**](tel:651-325-2200)

This information is for educational purposes only. It is not intended to replace the advice of your health care providers. If you have any questions, talk with your doctor or others on your health care team.

If you are a Gillette patient with urgent questions or concerns, please contact Telehealth Nursing at [**651-229-3890**](tel:651-229-3890).