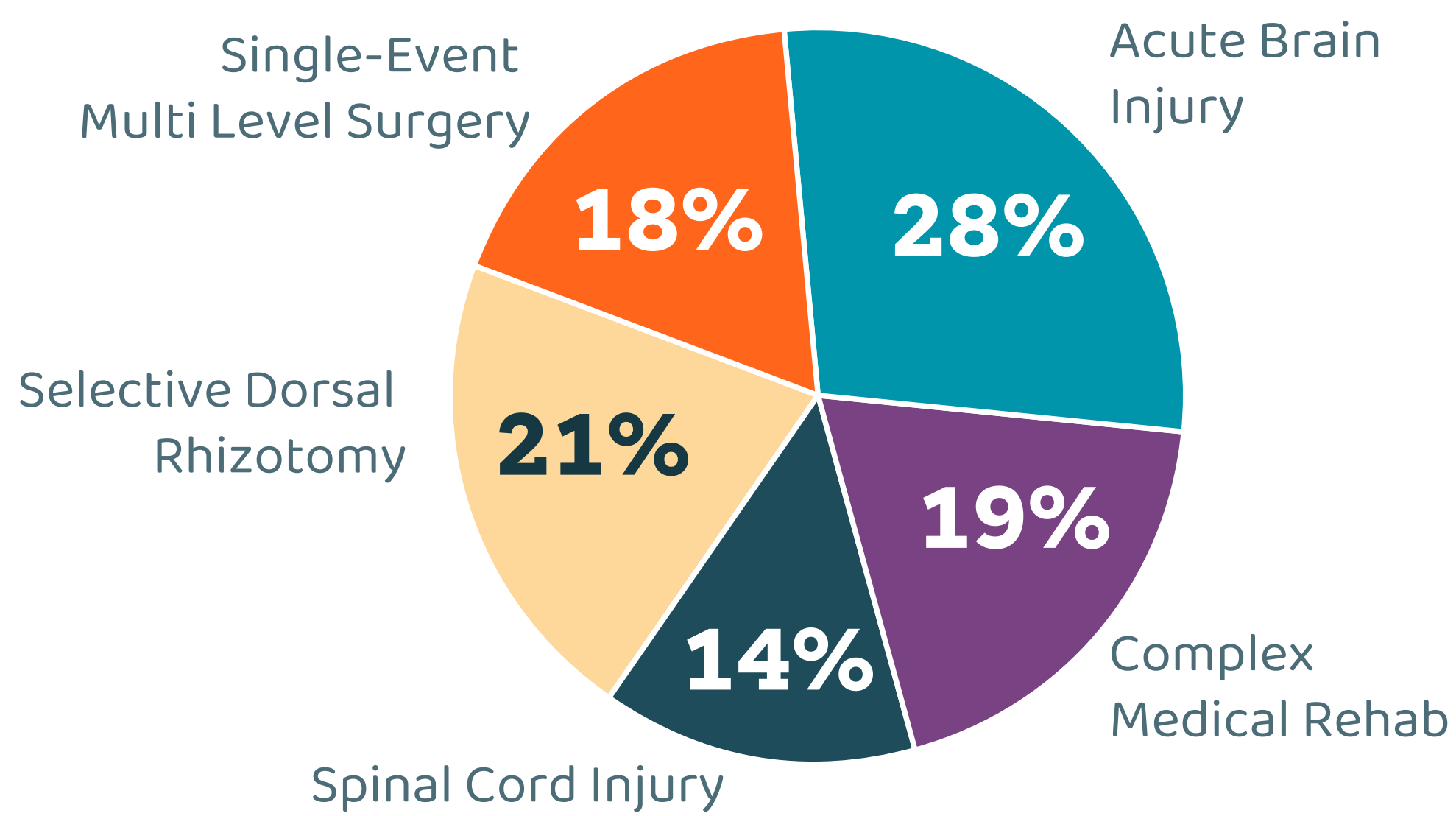


# Acute Inpatient Rehabilitation Program, 2022



## Patients We Serve

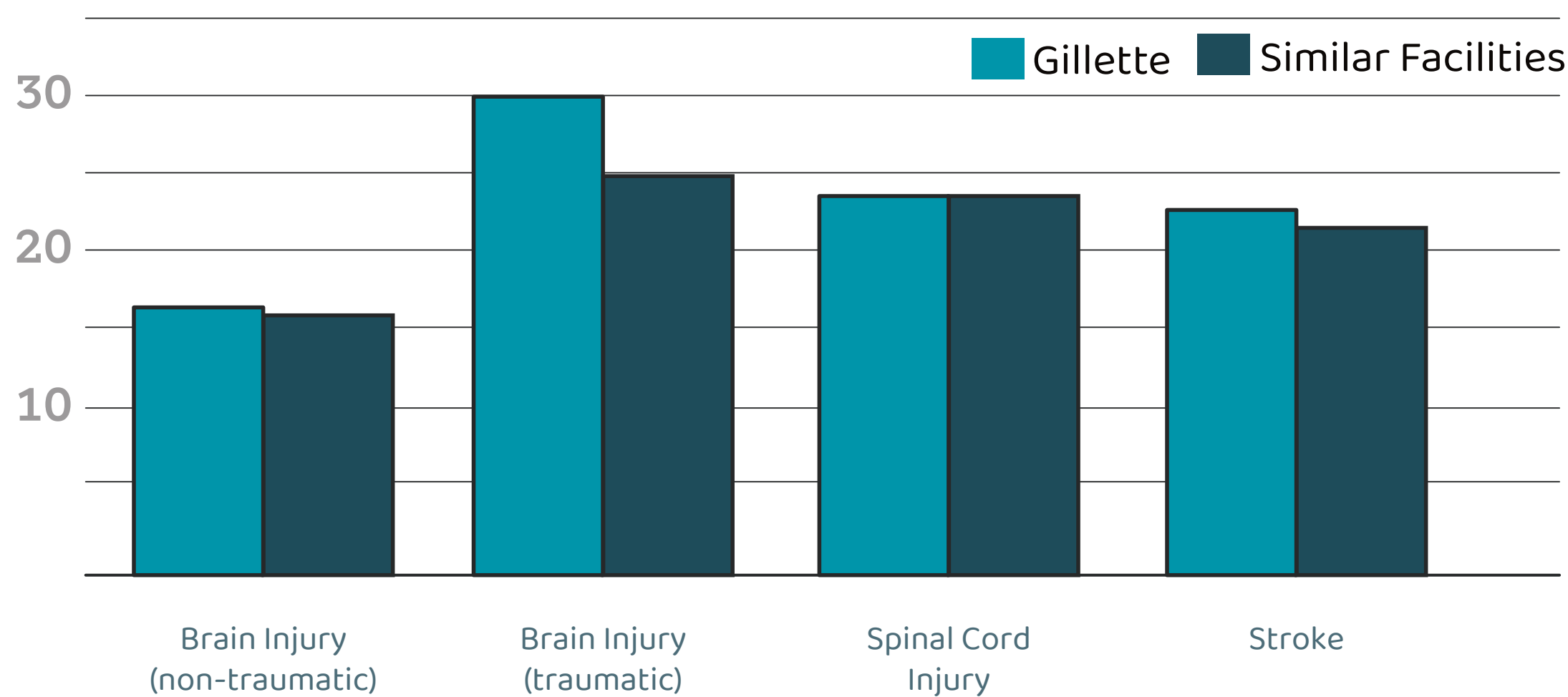


Total Rehabilitation Program Patients **100**

AGE	% Served
0-3	7%
3+ to 5	14%
5+ to 7	14%
7+ to 10	18%
10+ to 13	12%
13+ to 16	23%
Older than 16	11%

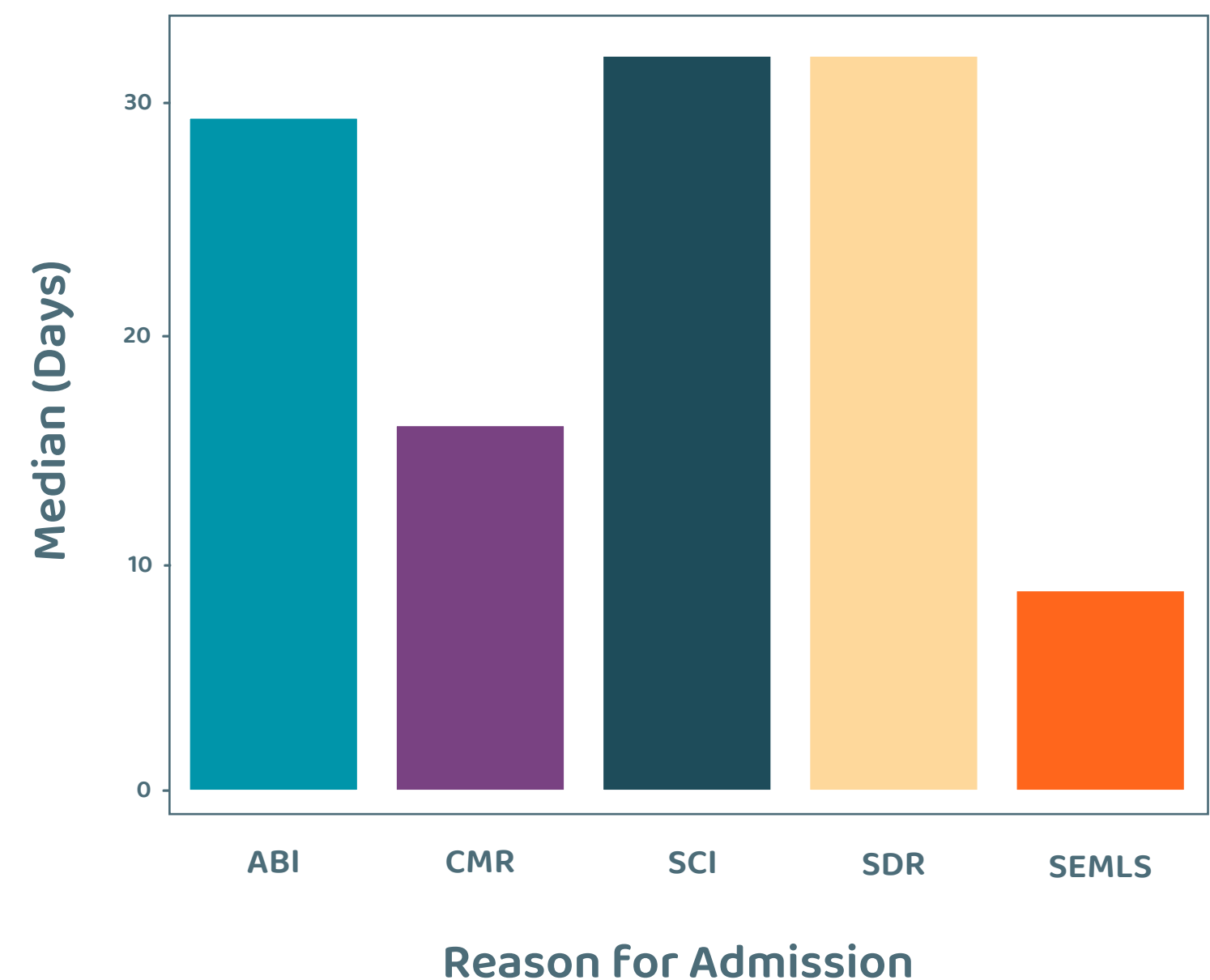


## Our Patient Functional Gain Through Inpatient Rehab Program



Children admitted into Gillette's pediatric acute rehab program demonstrated progress based on the WeeFIM assessment. Activities such as walking, taking care of themselves, communicating and thinking skills are rated. Patients are assessed at time of admission and again at discharge to determine WeeFIM gains.

## Median Length of Stay



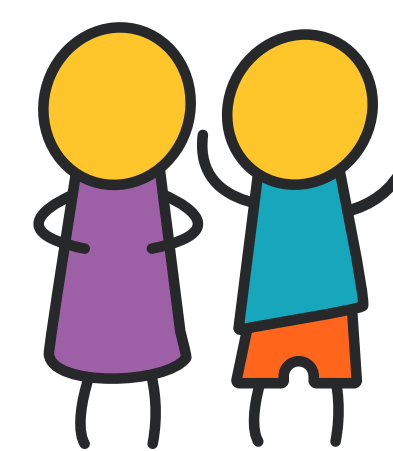
## Quotes from our patients

Best thing about being here was:

The great people! Everyone is so amazing- thank you :)

Getting to join my class virtually for circle time in the afternoon, using the pool, and using the Lokomat.

All of the doctors stopped talking and listened to me.



**3.77**

## Patient Satisfaction

MedTel Patient and Family Satisfaction Score (on a 4 point scale)



## Discharge to Home

96% of children were discharged to a home setting, exceeding other hospitals in the nation.